



ROBERT GORDON UNIVERSITY STUDENTS' UNION

STUDENTGUIDE

2019/20

rgu:union



NEED SOME EXTRA DOUGH?
WE'RE HIRING!

TEXT DRIVER + YOUR POSTCODE TO 81400*

OR VISIT WWW.DOMINOS-CAREERS.CO.UK FOR MORE DETAILS

*Standard text rate applies



WHAT'S INSIDE THIS GUIDE

WELCOME TO ROBERT GORDON UNIVERSITY

- 04 Welcome from your Student Presidents
- 06 Finding the Union on campus
- 09 What is the Students' Union?
- 10 How the Union works

YOUR VOICE

- 12 Standing up for RGU students
- 15 What is the Union's Exec Board?
- 16 Your Student Presidents & VPs
- 20 Student representative opportunities
- 23 Campaigns
- 24 Student media

YOUR OPPORTUNITIES

- 26 Find a society for you
- 30 Sports clubs & physical activity
- 33 Raising and giving
- 34 Volunteering

YOUR WELLBEING

- 36 Advice and support service
- 38 Peer Support & Nightline
- 40 Mental Health Agreement

YOUR COMMUNITY

- 42 Top quality student events
- 43 Student shop
- 44 Live Right housing campaign
- 45 How to book a space on campus
- 47 LGBT+ Network

YOUR FUTURE

- 48 Go Green
- 50 Helpful contacts
- 53 Academic calendar

rgu:union

Robert Gordon University
Students' Union
Union Way, Garthdee Campus,
Garthdee Road, Aberdeen AB10 7GE

tel: 01224 262 266
email: hello@rguunion.co.uk
web: www.rguunion.co.uk
fb: www.facebook.com/rguunion
instagram: @rguunion
twitter: @rguunion

Registered Scottish Charity SC0 16639



GARTHDEE
CAMPUS

FEEL





WELCOME TO RGU FROM YOUR STUDENT PRESIDENTS

Congratulations on being accepted to study here at RGU! We are your elected student presidents, and we want to wish you a very warm welcome to the University.

We have been voted in to represent the voice of RGU students, and work full time to make your student experience the best it can be. As much as going to university is about studying and learning, it is also about having fun and making memories, and that is where RGU:Union comes in. We provide a range of extra-curricular activities, representing your views and providing support. You are automatically a member of the Union, so it's up to you to make the most of it!

There are a vast amount of things you can get involved with at the Union, from societies, to sports clubs, to student media, to charity fundraising, academic and non-academic representation, plus so much more. We strive to make your time here as much fun as possible, but also as rewarding as possible by providing opportunities to develop your skills and supporting your physical and mental wellbeing.

We want to wish you the very best for the coming year, and remember, that if you ever have any questions or issues, don't hesitate to get in touch! Feel free to drop by our office on Union Way for a chat, or pop us an e-mail or Facebook message anytime.

KIERAN, EMMANUEL, & URSULA

WHERE TO FIND THE UNION ON CAMPUS



KAIM COTTAGE

Hidden away in between Aberdeen Business School and Garthdee House. You'll find multi-faith prayer facilities in here, society meeting spaces, plus our Go Green team's Swap Shop & Free Shop. Stop past during its opening hours and see if you can find a bargain!

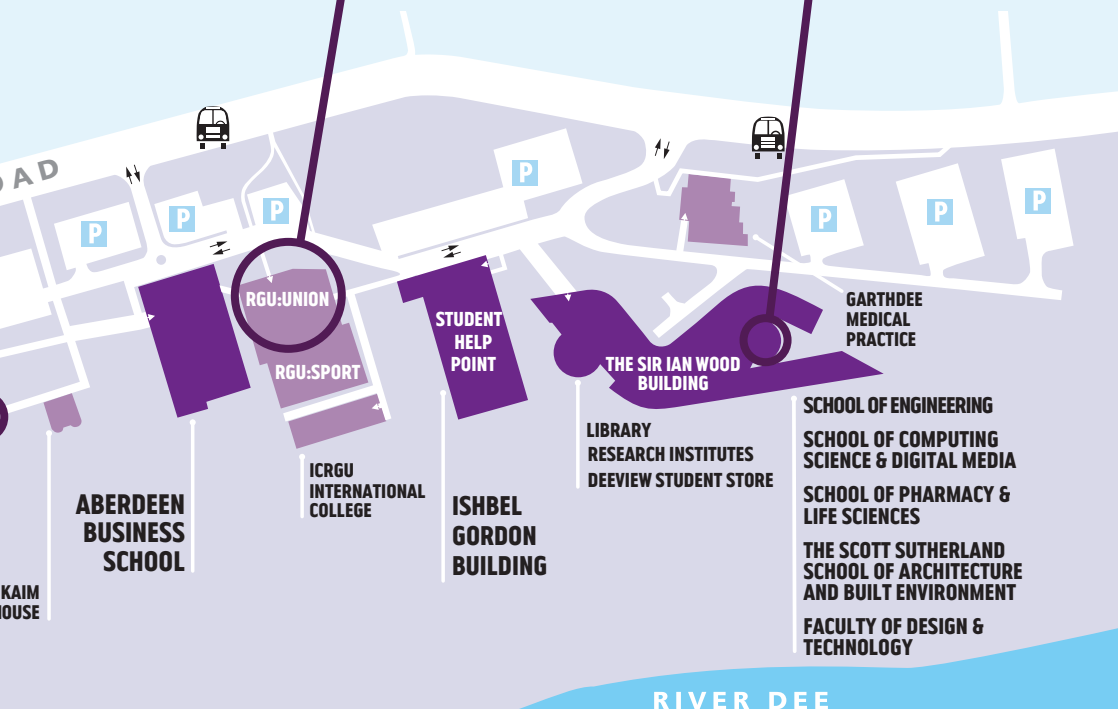


UNION WAY

Our main home on the RGU campus! Located just below the entrance to RGU:SPORT, find your Student Presidents and Union support staff working in our main student base, or you can stop by and relax between classes on The Terrace student social space. Lunch is available daily from the street food outlet. This is also where you'll find our the Deeview Student Store, and a bookable student meeting space. Find out more on page 46.

STUDENT HUB

A casual meeting and work space available to book by our societies, sports clubs, student groups or volunteers. This new hub contains computer access, plasma screens and informal seating which makes it perfect for small group meetings.



DID YOU
KNOW?

rgu:union

YOU **DON'T** NEED
TO JOIN RGU:UNION

.....

BECAUSE YOU ARE
ALREADY
A MEMBER

.....

As a student at Robert Gordon University, you automatically become a member of RGU:Union as soon as you enrol! That means that you have unlimited access to all of the services, campaigns and initiatives that the Union operates for the entire duration of your time at RGU.

Read on to find out more about how the Union works to enhance your time at RGU. If you have any questions, give us a call, send us an email, or drop in to our office on Union Way for a chat.

WHAT IS THE STUDENTS' UNION?

GOING TO UNIVERSITY ISN'T JUST ABOUT GETTING A DEGREE.

There is an entire lifestyle that comes with being a student. Studying is a big part of it, however it is also about the overall experience; trying new things, being adventurous and making the most of the opportunities available to you.

The Students' Union is here to make your time at RGU the best that it possibly can be. Our purpose is to support students by providing a number of different services and opportunities for you to get involved in. Being a student gives you the opportunity to try any number of exciting new things, such as being part of a sports team or society, taking part in student activities or trips, volunteering, raising money for charity, or simply meeting new people! The list is endless, but the bottom line is that we are here to help students, and that is our number one priority.

SO, HOW DO WE DO ALL OF THIS?

Well, it's simple, the Union is run by students at RGU, for students at RGU. Elections are held each year to vote in a team of student leaders, and it's their duty to make sure that you get the most out of your experience here.

All of this is largely funded by the University, but we also raise profits through our student shop and events, which then gets fed right back into helping you!

However, we don't just concentrate solely on providing extracurricular activities, we also focus on being the student voice and representing your wants and needs, not only to the University but on a national basis too.

So, with our full support, we guarantee you a fantastic student experience!



HOW THE UNION

STUDENTS

TRUSTEE BOARD

SABBATICAL EXECUTIVE

EXECUTIVE COMMITTEE

**SOCIETIES
FORUM**

**STUDENT
VOICE/AGM**

**SPORTS
FORUM**

That's you! The Union exists to help students at RGU, and students are at the heart of everything that we do.

This board is made up of RGU students, management and local stakeholders, and makes decisions which involve the Union's strategic direction.

The Sabbatical Executive contains our three Student Presidents and the Union's General Manager.

The Exec Board looks after the decisions which shape the day to day running of the Union. Turn to page 15 to find out more about them.

These different forums meet a number of times during the term, and give students an opportunity to raise and discuss key issues that they are facing, to find out what our team of Presidents and VPs are working on, and to have your say on the work that the Union does.

Our School Officers, Class Reps and Equality Champions play an important role in ensuring that your issues are addressed at these forums.

WORKS



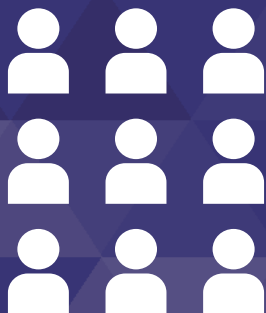
3 FULL TIME
**STUDENT
PRESIDENTS**

.....



6 PART TIME
VOLUNTEER
**STUDENT VICE
PRESIDENTS**

.....



SUPPORT STAFF &
STUDENT INTERNS



WE STAND UP FOR STUDENTS AT RGU

Representation; It's how we support our students, turning a good time into a great time! Representation means to stand up for a person or group of people, acting on their behalf. And that's exactly what we do at the Union. We tackle the tough problems so you don't have to! We also make sure you get every opportunity to enjoy yourself whether it's within the University, locally, nationally and sometimes even internationally!

But why is this so important? Well, for many of you, it might be your first time away from home and there is certainly a lot to learn - we want to make this move for you the best it can be.

Don't stress by getting hung up on problems - we're here to help! But we're not just here to help students who have moved away from home for the first time.

Issues we tackle could relate to any number of things such as funding for your education, cost of living, the quality of your course or even the quality of your social life!...the list goes on. It can often be difficult for students to sort these problems on their own and that is why the Union is here.





AND WE WORK IN **PARTNERSHIP** WITH THE UNIVERSITY

The Union is here to try and turn a good time at university, into an amazing time! We are passionate about making sure that your voice and your feedback is heard at all levels of both the Union and the University. Why is this important? Well, you all want to get a job after you graduate and are focused on getting the best grades possible, but in order to do that you need to have the best course possible. We want to tackle the issues you are facing, fight the big problems so that you don't have to.

In order to make the best student learning experience, RGU and RGU:Union work in partnership to both involve students in decision making, and engage them in making enhancements to student life. We do this because some of these problems, whether it is funding your education, the quality of your course, or the facilities on campus, can be quite difficult for students to solve on their own, but that's why the Union exists, to work with the university to make as many changes as possible.

Partnership at RGU can be seen in the range of representative roles, from Class Representatives, School Officers, Equality Champions, Vice Presidents, Presidents, and various other student reps who represent your views on a range of committees. Furthermore, through the culture of partnership, a number of big changes have been introduced thanks to students and staff working together.

- Training staff in Scotland's Mental Health First Aid;
- Launching 'Report & Support', an anonymous reporting system for gender-based violence;
- Lobbying for the introduction of the 1A bus service, with increased frequency and capacity at peak times;
- Introducing 24 hour library in exam time;
- Work to significantly improve WiFi service on campus.

Official Freshers Week 2019



**Saturday
7th September
Rickie & Melvin**



**Sunday 8th
September
Love Island's Anton Danyluk**



**Monday 9th
September
Full moon foam party**



**Tuesday 10th
September
DRIP
Launch**

**Wednesday
11th September
Skite ft The Beast**



**Thursday 12th
September
Winter Wonderland Snow Party**



**Friday 13th
September
Vanity Jungle Party**



**Saturday 14th
September
Fatman
Scoop**



Student Guide

rgu:union

ATIK



Web: www.atikclub.co.uk/Aberdeen | Email: aberdeen@atikclub.co.uk
5 Bridge Pl, Aberdeen AB11 6HZ | T: 01224 595239
72 hour licensing restrictions apply

WHAT IS THE UNION'S EXECUTIVE COMMITTEE

The Union is yours! That is the most important thing for students to know.

The big question is how can you *really* have an effect on how the Union is run? Well as with any organisation (including the University itself) we have a structure, and the students are at the top of that structure. But it is our Executive Committee that has the say on how the Union develops and makes its decisions. The Exec Committee needs you, the students, to let them know your thoughts on the Union, allowing us to keep the students' best interests as our primary aim.

If you check out the Constitution (the document which sets the rules by which the Union operates) it states that: "The Executive Committee shall be responsible for the day to day management and control of all of the affairs and property of the Association."

If you have a serious issue, get in touch with the Executive Committee! The board consists of our Presidents and VPs, as well as the Union's General Manager.

CONTACT THE EXEC
EXEC@RGUUNION.CO.UK



Meet Emmanuel, Ursula, & Kieran, your elected Student Presidents. They work full time for the Union to represent you on many levels throughout the University. Read on to find out more about them and their aims for the year.

YOUR STUDENT



PRESIDENT
SPORT & PHYSICAL
ACTIVITY

**KIERAN
MATTHEWS**

FROM: **BLAIRGOWRIE**
COURSE: **EVENTS
MANAGEMENT**

AIMS FOR THE YEAR

- Supporting clubs who are struggling with fundraising targets
- Making sure all events are planned well in advance
- Major focus to be placed on relevant wellbeing areas
- To identify relevant clubs / teams who have potential to be promoted through analysing their development plans.
- To improve coaching relationship with President and sports clubs

PRESIDENTS

PRESIDENT COMMUNICATION & DEMOCRACY

**URSULA
OJIJI**

FROM: **NIGERIA**
COURSE: **CORPORATE
COMMUNICATION AND
PUBLIC AFFAIRS**

AIMS FOR THE YEAR

- Ensure speedy implementation of motions as voted in the last AGM.
- Ensure a time table mobile app is implemented for students for easy navigation to lecture halls and modules.
- Advocate and work towards providing a social space for the student union.
- Implement campaigns to tackle the high cost of student living and accommodation.
- Work with the university's catering team towards subsidizing the prices of food sold on campus.

PRESIDENT EDUCATION & WELFARE

**EMMANUEL
AKERELE**

FROM: **NIGERIA**
COURSE: **CORPORATE
COMMUNICATION AND
PUBLIC AFFAIRS**

AIMS FOR THE YEAR

- Improve student representation and enhance the Class Rep and School Officer system.
- Combat gender-based violence towards students by introducing a reporting system and awareness training
- Introduce a year-round 24/7 study space on campus.
- Improve mental health support services, general student wellbeing, and ensure that the Student Mental Health Agreement Policy is produced.
- Improve placement options and alternatives.

YOUR STUDENT VICE PRESIDENTS



VICE PRESIDENT
EDUCATION

**ROSS
LEVEN**

VPEDUCATION@RGUUNION.CO.UK



VICE PRESIDENT
SOCIETIES

**MEGAN
KERR**

VPSOCIETIES@RGUUNION.CO.UK

Our team of Vice Presidents volunteer their time to represent you throughout the University and run campaigns with the aim of making your student life the best it can be. They each specialise in one area, so if you have an idea or an issue, get in touch with the relevant member of our President or VP team.



VICE PRESIDENT
SPORT

**JORDAN
MOORE**

VPSPORT@RGUUNION.CO.UK



VICE PRESIDENT
WELFARE

**EMMANUELA
JENEWARI**

VPWELFARE@RGUUNION.CO.UK



VICE PRESIDENT
INTERNATIONAL

**DAMI
YUSUF**

VIPINTERNATIONAL@RGUUNION.CO.UK



UP TO 10% OFF



Microsoft

OFFERS & DISCOUNTS

WHSmith

**15% OFF ARTIST
MATERIALS**

ODEON

FANATICAL ABOUT FILM

**25% OFF STUDENT
TICKET PRICE**

asos

10% OFF



Domino's

25% OFF



10% OFF

**national
express**

20% OFF



16-25 Railcard

12% OFF

PLUS MANY, MANY MORE

Search TOTUM for discounts on
over 200 of your favourite brands



Powered by
**nus
extra**

Details correct at time of release (August 2018). See online for T&Cs.

ACADEMIC REPRESENTATIVE OPPORTUNITIES

STUDENT REPRESENTATIVES

These reps are elected from each course, and act as the voice for their class. Student representatives attend a number of meetings with the university and union, to raise their concerns or issues and, find out about developments and updates. We encourage as many people to run to be a student representative, as it is a valuable voice to making change at RGU. Student reps have helped us win better transport services, microwaves on campus, extended library hours in exams and much more!

SCHOOL OFFICERS

Similar to student representatives, except they represent an entire school, and bring higher lever issues to the senior management, and look after the quality and teaching of the school.

EQUALITY CHAMPIONS

Equality Champions are reps for particular student groups, such as LGBT+, Women, Faith, Mental Health, Disability, and more. They assist the universities equality and diversity group and run events and projects to enhance diversity at RGU.



INTERNATIONAL REPRESENTATIVES

International Reps were introduced in recent years, and are a group of students whose focus is to represent international students on various committees.

Nominations for these roles will launch in the first semester, and students can contact vpi@rguunion.co.uk for more information.



LAST YEAR WE HAD
449
CLASS REPS REGISTERED
WITH THE UNION

HAVE YOUR SAY

UNIVERSITY COMMITTEES

The University has a number of committees which feature student representation. This gives you the opportunity to make some massive changes in the University, ranging from having all lectures recorded on podcast to having free drinking water available on campus. We are always looking for students to sit on these committees, giving you an opportunity to make your point of view heard to key members of the University management - you would be amazed what can be achieved in these meetings!

UNION ANNUAL GENERAL MEETING

If you want to see the Union make a major change to policy or activities, all members are invited to attend our Annual General Meeting. This is your chance to vote on significant changes, hold your elected Presidents and VPS to account, as well as review the operations of your Union.

If you have a particular interest and want to make a change in one particular area, then we can help with that also. There are various ways in which you can affect certain areas of university life.

It's important for you to remember that if you become a student here, you have a say in the Students' Union. The reason the Union keeps up-to-date with what students want is because it lets students make the decisions. So when you join us, get involved, and don't look back!



STUDENT FEEDBACK FORUMS

In order for the Presidents to know and understand your views, they host various forums throughout the year. These forums are your opportunity to bring up issues or concerns that the union can then go away and work on for you! There are different forums for different areas of student life:

Student Voice Forum focuses on getting your feedback and opinion on university and student life issues such as teaching, learning and assessments, university facilities, transport, accommodation, volunteering, and more.

Societies Forum is an opportunity for society or student group members to get together and discuss any issues or concerns with regards to societies or student participation.

Sports Forum is a chance for sports teams to come together to review the sports policies and activities as well as to elect the sport and physical activity team for the year.

WE RUN CAMPAIGNS ABOUT ISSUES THAT AFFECT **YOU**



**nu3
AWARDS
2019**

NOMINEE

**CAMPAIGN OF
THE YEAR
SPEAK UP
SPEAK OUT**

**STUDENT OF
THE YEAR
CHARLOTTE
LITTLE**

**UNION OF
THE YEAR**

WHAT DO YOU CARE MOST ABOUT?

Campaigns can take shape in a number of different ways. One of the most common forms is the awareness campaign. When a campaign is done well it can attract attention from all over the UK, allowing students to get their voice heard loud and clear. It's all about taking your ideas forward, and making a difference.

Our students have led campaigns to raise awareness surrounding working conditions in sweatshops; and have shown support for liberation campaigns such as LGBT+, women, international students and many others.

Students at RGU have also taken part in campaigns based around mental health issues, cultural awareness, environmental initiatives and many more.

As well as helping to increase public awareness of these issues, pressure from RGU campaigners has directly resulted in better value tickets for students on public transport services and has seen RGU officers lobby MPs and MSPs on a range of issues that effect students.

Campaigners have also set up a range of initiatives which has led to the Union being recognised by winning Green Impact awards, Equality and Diversity awards, and Campaign of the Year awards at a national level.

STUDENT MEDIA



STUDENT-LED MEDIA PLAYS A KEY PART IN STUDENT LIFE AT ROBERT GORDON UNIVERSITY. EACH OF OUR DIFFERENT MEDIA OUTLETS ARE RUN EXCLUSIVELY BY RGU STUDENTS FOR RGU STUDENTS

WE HAVE SPLIT OUR MEDIA OUTLETS INTO DIFFERENT GROUPS, WITH EACH FOCUSING ON ONE SPECIFIC AREA OF PRODUCTION



RGU:RADIO

RGU:Radio is the official student-run radio station at the university. The station works as an arm of the Students' Union and aims to be the voice of the students for information, news and entertainment.

The station aims to be a fresh, modern station for the students at RGU, with the aim of playing the songs and shows that reflect the interests of the students.

RADAR MAGAZINE

Printed editions are released 3 or 4 times a year, with their website updated daily with new articles, interviews, reviews and features.

Topics include student activities, sport, societies, fashion, arts, music, food, and all areas of student life. If you're passionate about writing and would like to see your work in print, get in touch! The team are always looking for new members.

RGU:TV

RGU:TV is the Union's very own student-led TV channel. RGU:TV currently produces regular on-demand videos and occasional live content to help promote events on campus, and raise awareness of societies, sports clubs and more.

PURPLE WEDNESDAYS

The only dedicated university sports production in the country, Purple Wednesdays is released weekly during term-time to keep you up to date with all things sport at RGU.

Featuring the latest results and fixture updates, interviews with our sporting superstars, plus regular challenges and special features, look out for the latest episode hitting your email inbox every Wednesday.

If you have an interest in sports media production, get in touch to join the team!

THE **SOCIETY QUALITY MARK** SYSTEM WAS INTRODUCED IN 2017 TO REWARD THE MOST ACTIVE AND CONSISTENT GROUPS AT RGU. OUR FIRST GOLD WINNERS WERE ANNOUNCED THIS PAST YEAR.



EXCITING SOCIETIES

Our societies range from course-related ones such as Midwifery, Forensics and Physiotherapy to social societies full of people from across the university who have a common interest, such as gaming, film, music, or photography. We also have political societies and several faith-based groups too - there's definitely something for everyone!

With more than 40 societies, our groups total over 1980 students, and in 2019/20 we're keen to launch new societies and get even more people involved! Starting a new society is surprisingly easy, so if there is a group you'd like to see, come and chat to our Student Development

and Volunteering Coordinator and our Societies VP, who will take you through it step-by-step.

It's also great for your development and for your CV (plus you can have a lot of fun too!) while the Union team are here to help you with everything from financing to organising social events!

TO FIND OUT MORE ABOUT THE DIFFERENT SOCIETIES AVAILABLE, OR TO FIND OUT HOW YOU CAN START YOUR OWN SOCIETY, GET IN TOUCH!

E: SOCIETIES@RGUUNION.CO.UK
T: 01224 262 265
W: RGUUNION.CO.UK/SOCIETIES



PHYSIOTHERAPY SOCIETY

PHYSIO@RGUUNION.CO.UK



**57'10 ARCHITECTURE SOCIETY
ABERDEEN INTERPROFESSIONAL EDUCATION
COMPUTING SOCIETY
DRAMA SOCIETY
DUMBLEDORE'S ARMY (HARRY POTTER)
CREATIVE & CULTURAL BUSINESS SOCIETY
FEEL GOOD SOCIETY
FILM SOCIETY
GO GREEN
IHI PATIENT SAFETY CHAPTER
LAW SOCIETY
PHOTOGRAPHY SOCIETY**

**5710@RGUUNION.CO.UK
ABERDEENIPESOCIETY@GMAIL.COM
COMPSOC@RGUUNION.CO.UK
DRAMASOCIETY@RGUUNION.CO.UK
HARRY.POTTER@RGUUNION.CO.UK
CCBSOCIETY@RGUUNION.CO.UK
FEELGOOD@RGUUNION.CO.UK
FILM@RGUUNION.CO.UK
GOGREEN@RGUUNION.CO.UK
IHI@RGUUNION.CO.UK
LAWSOC@RGUUNION.CO.UK
PHOTOGRAPHY@RGUUNION.CO.UK**



**CHRISTIAN UNION
CREATIVE WRITING & POETRY SOCIETY
GENDER EQUALITY & FEMINISM SOCIETY
ICE SKATING**

**CU@RGUUNION.CO.UK
CWPS@RGUUNION.CO.UK
GEF@RGUUNION.CO.UK
ICESKATING@RGUUNION.CO.UK**

**AFRICAN-CARIBBEAN SOCIETY
ALWAYS STRIVE AND PROSPER SOCIETY
APPLIED HEALTH PROFESSIONALS SOCIETY
APPLIED SOCIAL SCIENCES
BULGARIAN SOCIETY
BUSINESS SOCIETY
DARTS SOCIETY
DIAGNOSTIC RADIOGRAPHY
ENGINEERINGON SOCIETY
ENTREPRENEURSHIP AND INNOVATION SOCIETY
ESN (ERASMUS STUDENT NETWORK)
FORENSIC SOCIETY
GAMING
ISLAMIC SOCIETY
LA SOCIEDAD (LATIN AMERICAN)
LANGUAGE SOCIETY
LEAGUE OF ANIME
LIFE SCIENCES SOCIETY
MENTAL WELLBEING
MIDWIFERY SOCIETY
MODEL U.N. SOCIETY
MOOTING SOCIETY
MUSIC SOCIETY
NIGERIAN STUDENT ASSOCIATION
NURSING SOCIETY
POLITICS & DEBATING SOCIETY
RACING
RSA (RESEARCH STUDENT ASSOCIATION)
SOUTH ASIAN SOCIETY**

**ACS@RGUUNION.CO.UK
ASAP@RGUUNION.CO.UK
AHSS@RGUUNION.CO.UK
ASSS@RGUUNION.CO.UK
BGSOCIETY@RGUUNION.CO.UK
BUSINESS-SOCIETY@RGUUNION.CO.UK
DARTS@RGUUNION.CO.UK
D-RADZ@RGUUNION.CO.UK
ENGON@RGUUNION.CO.UK
EISOCIETY@RGUUNION.CO.UK
INFO@ESNUK-RGU.ORG
FORENSICS@RGUUNION.CO.UK
GAMING@RGUUNION.CO.UK
RGUISOC@RGUUNION.CO.UK
LASOCIEDAD@RGUUNION.CO.UK
LANGUAGESOCIETY@RGUUNION.CO.UK
ANIME@RGUUNION.CO.UK
LIFESCIENCES@RGUUNION.CO.UK
MENTALWELLBEING@RGUUNION.CO.UK
MIDWIFERY@RGUUNION.CO.UK
RGU4MUN@RGUUNION.CO.UK
MOOTING@RGUUNION.CO.UK
MUSICSOCIETY@RGUUNION.CO.UK
NIGERIANCOMMUNITY@RGUUNION.CO.UK
SOCIETIES@RGUUNION.CO.UK
PADS@RGUUNION.CO.UK
RACING@RGUUNION.CO.UK
RSA@RGUUNION.CO.UK
RGUSAS@RGUUNION.CO.UK**

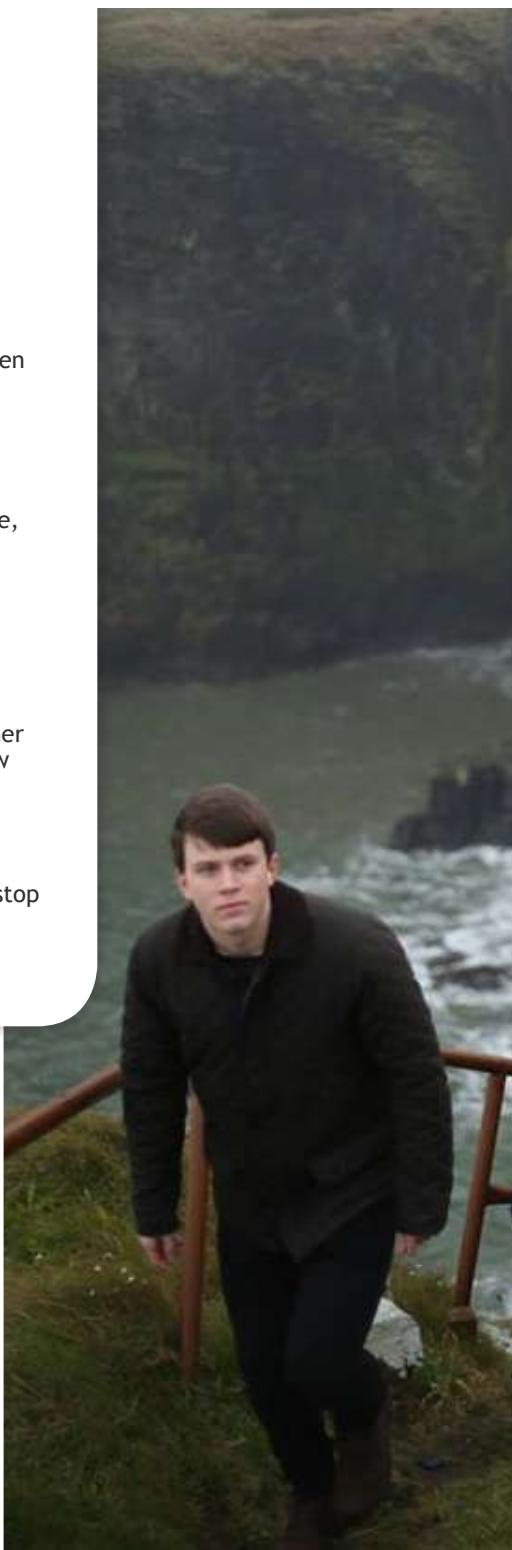
DUKE OF EDINBURGH AWARD

The Duke of Edinburgh Award (DofE) is open to anyone aged between 14 and 24. The Award is a great opportunity to build the skills you will require in the future.

The Union offers Bronze, Silver and Gold Awards (for those with no DofE experience, direct entry to both levels is possible!). All levels of the Award have four sections - Volunteering, Physical, Skill and the Expedition. For your Gold Award, you will also have an extra component - the Residential Section.

RGU:Union has recently joined other Higher Education institutions in Scotland and now offer the Award to all students within the age category!

To find out more about how you can work towards your DofE awards while at RGU, stop by the Union office for a chat or email dofe@rguunion.co.uk





STUDENT ACHIEVEMENT AWARDS

The Student Achievement Awards exist to reward student involvement at Robert Gordon University.

This covers a wide range of roles such as being a society member, class rep, volunteer and more. The event started out as the Scarlet & Gold Awards and has grown remarkably ever since. It incorporates the Scarlet Awards, RGU:Union Volunteering Awards, Student Contribution Awards, and Student Rep Awards. The Scarlet Awards are given to society members and volunteers for their hard work and dedication. This includes a Half Scarlet, Recognition Award and the much coveted Full Scarlet Award.

The ball is open to all students, so come along and celebrate the achievements of your fellow students!

rgu:union

**STUDENT ACHIEVEMENT
AWARDS BALL 2019**

FIND OUT ABOUT THE MANY DIFFERENT
VOLUNTEERING OPPORTUNITIES
AVAILABLE AT RGU ON PAGE 34

SPORTS CLUBS & PHYSICAL ACTIVITY



Sport is a key part of the student experience and enjoyment at University. You have the chance to get involved in any number of activities and sports, or even develop your own club!

RGU SPORT has on-site indoor facilities to support a range of sports from badminton, water polo and basketball to indoor hockey and rock climbing to name but a few. We use top facilities to ensure that you have the best experience possible, and cater for a large range of outdoor activities, from football and rugby to rifle and snow sports - everyone is invited to have a go!

With over 30 different sports clubs it's hard not to find something that suits you. If nothing takes your fancy, why not set one up and let us support you in creating it. In recent years we have seen the creation of weightlifting and mountain biking clubs, as well as our very own cheerleading squad.

Get in touch with our President (Sport & Physical Activity) for more details on our clubs.

SPORTS CLUB A-Z

ATHLETICS
BADMINTON
BASKETBALL
BOXING
CHEERLEADING
CRICKET
CURLING
DANCE
FOOTBALL
GAELIC FOOTBALL
GOLF
GYMNASTICS
HOCKEY
HORSE RIDING
KARATE
KICKBOXING
LACROSSE
MOUNTAIN BIKING
NETBALL
PURPLE WEDNESDAYS
RIFLE
ROWING
RUGBY
SHELTERSTONE
SHINTY, HURLING & CAMOGIE
SNOWSPORTS
SQUASH
SWIMMING & WATERPOLO
TABLE TENNIS
TENNIS
TRAMPOLINING
VOLLEYBALL
WEIGHTLIFTING

ATHLETICS@RGUUNION.CO.UK
BADMINTON@RGUUNION.CO.UK
BASKETBALL@RGUUNION.CO.UK
BOXING@RGUUNION.CO.UK
CHEERLEADING@RGUUNION.CO.UK
CRICKET@RGUUNION.CO.UK
CURLING@RGUUNION.CO.UK
DANCE@RGUUNION.CO.UK
FOOTBALL@RGUUNION.CO.UK
GAELICFOOTBALL@RGUUNION.CO.UK
GOLF@RGUUNION.CO.UK
GYMNASTICS@RGUUNION.CO.UK
HOCKEY@RGUUNION.CO.UK
HORSERIDING@RGUUNION.CO.UK
KARATE@RGUUNION.CO.UK
KICKBOXING@RGUUNION.CO.UK
LACROSSE@RGUUNION.CO.UK
MOUNTAINBIKING@RGUUNION.CO.UK
NETBALL@RGUUNION.CO.UK
PURPLEWEDNESDAYS@RGUUNION.CO.UK
RIFLE@RGUUNION.CO.UK
ROWING@RGUUNION.CO.UK
RUGBY@RGUUNION.CO.UK
SHELTERSTONE@RGUUNION.CO.UK
SHINTY@RGUUNION.CO.UK
SNOWSPORTS@RGUUNION.CO.UK
SQUASH@RGUUNION.CO.UK
SWIMMING@RGUUNION.CO.UK
TABLETENNIS@RGUUNION.CO.UK
TENNIS@RGUUNION.CO.UK
TRAMPOLINING@RGUUNION.CO.UK
VOLLEYBALL@RGUUNION.CO.UK
WEIGHTLIFTING@RGUUNION.CO.UK

TO FIND OUT MORE ABOUT JOINING A SPORTS CLUB DURING YOUR TIME
AT RGU, CONTACT OUR PRESIDENT OF SPORT & PHYSICAL ACTIVITY

E: PRESSPA@RGUUNION.CO.UK
T: 01224 263 665
W: RGUUNION.CO.UK/SPORT

ANNUAL SPORTS EVENTS

BLUES BALL

A mix of prestige and mayhem involving all the sports clubs and guests; it's an opportunity to reward all our outstanding athletes for their efforts over the season.

The most prestigious award, the Full Blue, is typically reserved for students who have played at the highest level of university sport, usually their country and in some cases Great Britain, and brought acclaim to RGU whilst doing so. Past presenters of the awards include former Scotland manager Craig Brown, rugby legend Doddie Weir, swimming star Steve Parry and football legend Willie Miller.

GRANITE CITY CHALLENGE

Granite City Challenge is the largest varsity competition in Scotland with RGU battling Aberdeen University in over 30 sports. The battle this year will take place in March and is now held across both RGU and Aberdeen campuses.

ABERDEEN UNIVERSITIES BOAT RACE

The Boat Race is a prestigious event again with Aberdeen University and RGU challenging each other to a race along the River Dee. Come along and get involved or support RGU to victory!





RGU:RAG is the fundraising arm of the Union. They organise a number of charitable events throughout the year, with all the proceeds going to local, national, and international charities. RAG is an entirely student-led group, supported by an elected RAG Chair and in-house elected committee. These core committee members assist in the organising of the overall running and support for the fundraising efforts of students and staff throughout the academic year.

RGU:RAG has been established at RGU since 2003. Originally starting as a society, the group has continued to develop over the last ten years, and 2012/13 saw the expansion to becoming a fully fledged arm of the Students' Union, and open to all members of the student body. This allows for a greater awareness but also increased involvement in our activities and volunteering opportunities.

RAG has raised well over £100,000 for countless different charities in the last few years, through various different methods including bake sales, nippy dips, street collections, fashion shows, challenge events, and more. This year is no different and the team are always looking for more members to get involved with events or to think of new events to host. If you've got a interesting volunteering opportunity or a fun way of fundraising they would love to hear from you.



RAISING & GIVING

HELP US RAISE MONEY FOR CHARITY

DO SOMETHING EXCITING WITH YOUR FREE TIME!

If you're looking for a fun way to boost your CV and gain invaluable experience, why not try volunteering!

From skydiving and sports coaching to youth work and fundraising, we can help find the right opportunity for you. There are lots of different ways to get involved, so, get something more out of your time at university!

VOLUNTEER WITH THE UNION

We have lots of opportunities to get involved in volunteering through RGU:Union - you could be a Student Rep, a Cultural Ambassador, RAG Fundraiser, Nightline Listener Elected Officer, Bookshop Volunteer, a Society Committee Member or you could get involved in our exciting student media projects RGU:Radio, RGU:TV, and Radar Magazine.

VOLUNTEER IN THE COMMUNITY

Alternatively you can volunteer with any of our registered organisations and charities. We have a variety of registered charities offering activity-based placements for students including conservation work, befriending and office support, as well as marketing and media opportunities and a whole lot besides.

ONE-OFF VOLUNTEERING PROJECTS

If you would rather not commit regularly, but would like to try volunteering out, why not get involved in one of the many one off projects we run throughout the year? These range from fun runs to high profile events such as the annual Torch Parade, Europe's largest torch-lit procession.

WE PARTNER WITH MANY LOCAL AND NATIONAL ORGANISATIONS TO PROVIDE VOLUNTEERING OPPORTUNITIES FOR RGU STUDENTS, UNCLUDING:



There are also regular one off events for students who would like to take time out, possibly only once a month, to help others with activities such as bag packing, street collecting or beach cleaning. There is a volunteering opportunity to suit everyone, and we can work around your schedule to find an opportunity that incorporates your hobbies or your course.

RECOGNISING THE EFFORTS OF OUR VOLUNTEERS

If you register as a volunteer with us you also have the opportunity to take advantage of the Saltire Awards. This scheme encourages young people to volunteer, and lets you log hours and work towards gaining certificates and recognition for the good work you do. Consider the benefits of volunteering;

not only do you receive training and practical experiences in challenging and rewarding situations, but we can help you gain recognition for this good work - the certificates that you receive will look fantastic to prospective employers.

Pop in to the Union office on Union Way to find out more about our range of support for both new and existing volunteers.

TO SEE A FULL LIST OF OUR PARTNER ORGANISATIONS, AND TO KEEP UP TO DATE WITH THE LATEST VOLUNTEERING OPPORTUNITIES, VISIT OUR WEBSITE:

RGUUNION.CO.UK/VOLUNTEERING

ADVICE & SUPPORT

During your time at Robert Gordon University, sometimes things may go wrong or you may need a little extra support - and that's perfectly okay. This section will help point you in the right direction. At RGU:Union, we want to provide you with the assistance to fully enjoy your time at RGU. We will listen, at a time that is convenient for you, and promise not to judge you but to offer help and support. You can be assured we will treat your concerns confidentially.

ACADEMIC ISSUES

If you are experiencing something in your personal life that significantly affects your ability to do your coursework or sit an exam - such as a medical issue, bereavement, or another unexpected change in circumstances - we can help advise on what you need to do to ensure the impact on your studies is taken into account. This may involve making a Coursework Extension Request, a Deferral Request or an Academic Appeal.

HEALTH & WELLBEING

If you have a short-term or long-term medical concern or illness that is affecting you, we can provide you with support and advice to minimise the impact of this on your time at RGU.

Your mental wellbeing is also incredibly important. If you feel in need of emotional or pastoral support, whether this is a new or ongoing issue, there are a number of support services throughout the University, and we can help you get in touch with these.

The Union also offers a discreet contraception service for all genders. We want you to be safe whatever you do, and won't ask invasive questions, nor judge in any way.

We also have information available on the structure of the Scottish health system, and who best to turn to for medical advice and treatment.



YOU CAN CONTACT THE UNION'S ADVICE SERVICE CONFIDENTIALLY BY CALLING 01224 262 294, EMAIL AT ADVICE@RGUUNION.CO.UK, OR ALTERNATIVELY YOU CAN DROP INTO OUR OFFICE AT RGU:UNION ON UNION WAY.

FINANCIAL ISSUES

During your time studying at RGU, it's possible that you may encounter financial hardship. If you do, there is help that can be given in such situations. First of all, you may wish to speak to the Student Advice Coordinator, who can let you know how to access short-term financial relief or emergency food provision.

You may also wish to speak to a Financial Aid Officer at the University. They can be contacted at studentfinance@rgu.ac.uk, on 01224. 262127, or at weekly drop-in sessions at the Student Help Point (Mondays and Thursdays during term time).

EQUALITY & DIVERSITY

RGU:Union is here to represent you, and we have a group of elected Presidents, Vice-Presidents and Equality Champions who can help you to resolve any issues with diversity that you may face, and who strive to ensure that every student is treated fairly and equally.

We try and ensure there is additional support for all under-represented areas of the student body. This includes distance learning students, LGBT+ students, mature students and students with disabilities. We are also committed to gender equality, and fighting racism and discrimination.

We're always happy for you to visit us and discuss any issues you are facing, and we'd love to hear your suggestions to support our campaign of encouraging diversity across the campus.

THE UNIVERSITY ALSO OPERATES A STUDENT COUNSELLING AND WELLBEING SERVICE. YOU CAN CONTACT THEM BY CALLING 01224 262 120 OR BY EMAIL AT COUNSELLING@RGU.AC.UK

FAITH & BELIEF

Scotland is a multi-cultural country and we recognise that our students are of many belief systems, faiths, or none. If you require a quiet area for praying, meditation, or a space for personal reflection, a number of multi-faith rooms are available to use at Kaim Cottage (beside the Business School - ask at the reception there for the code needed to enter Kaim Cottage). All we ask for is some tolerance of others' personal beliefs while using the areas.

There are also a number of student-led, faith-based societies, where you can get in touch with other students with similar beliefs. We can also help you set one up, if you wish. There is also a University chaplain, who will meet with you whatever your faith and beliefs.

HOW TO CONTACT US

If you need to ask for impartial advice on any matter affecting you, you can speak to our Student Advice Coordinator. The Advice Coordinator can be contacted via email (advice@rguunion.co.uk) or phone (01224 262294). Alternatively, you can visit the Advice Coordinator in person via appointment, even during vacation periods.

Details of any meetings and the content of any discussion will not be shared with anyone other than the Advice Coordinator without the agreement of the student.

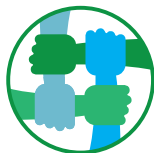
...AND WE ARE HERE TO LISTEN

Peer Support is a newly introduced Student-Led peer to peer service. Throughout the year the group will offer on-campus sessions which are confidential and non-judgemental, offering an anonymous listening and support service.

The group is currently launching, having elected its first ever committee, and is keen to recruit student volunteers to participate. Our volunteers are also being trained in official peer support training developed in conjunction with Oxford University.

Our Peer Supporters will be able to provide confidential in-person sessions, where you can talk about anything on your mind, along with workshop style sessions on self-help. Whether it's depression, anxiety, stress, bullying, or homesickness, Peer Support will be able to offer the support you need, or signpost you on to the appropriate service.

It should be noted Peer Support is not a replacement for counselling, but rather an early-intervention service for mild-wellbeing issues, that allows you the opportunity to talk about what's on your mind rather than keeping it bottled up, which can lead to more severe wellbeing issues later on.



rgu:union

**RGU PEER
SUPPORT**

YOU CAN CONTACT PEER SUPPORT BY EMAIL
AT PEERSUPPORT@RGUUNION.CO.UK, OR
ALTERNATIVELY YOU CAN DROP INTO OUR OFFICE
AT RGU:UNION ON UNION WAY.

YOU CAN CONTACT NIGHTLINE BY CALLING 01224
263646, BY EMAIL AT [LISTENING@RGU.NIGHTLINE.
AC.UK](mailto:LISTENING@RGU.NIGHTLINE.AC.UK), OR VISIT RGUUNION.CO.UK/NIGHTLINE FOR
INSTANT MESSAGING.





RGU: Nightline is a Student-Led peer to peer helpline that offers a non-judgmental, confidential and anonymous listening and support service to students at Robert Gordon University outside of University academic hours (operating 8pm-8am).

Our specially trained student volunteers recognise that university can be a time of many changes and challenges, and can empathise with callers. They don't judge; they don't give advice; and they certainly don't tell callers what to do - they just listen. Best of all, Nightline is confidential and anonymous, meaning students accessing the service don't even have to give their name.

It is said that 1 in 4 people suffer from mental health illnesses, and for students this may be for a variety of issues: from academic stress, bullying or debt to loneliness, depression or bereavement; from arguments with flatmates or worries about a friend, to addictions, eating disorders or self-harm; from relationship or family problems to sexuality, sexual abuse or abortion. As well as our phone lines, we also offer support via email, instant messaging, and can provide information and sexual health supplies.



MENTAL HEALTH

RGU strives to create a culture within our community that promotes and supports positive wellbeing in order to create the best possible student experience.

The Student Mental Health Agreement outlines the University and Union's commitment to improving the mental wellbeing of all students through activities and initiatives. With the guidance of NUS Scotland, RGU has mapped this effort through the following five main objectives:

- Explore mechanisms to identify students at risk of poor mental health and put in place early intervention strategies and identify pathways to appropriate support.
- Create opportunities to normalise conversations around mental health in the RGU community and embed this in the culture.
- Actively encourage groups and activities to increase a sense of belonging among students.
- Design and deliver sessions which facilitate staff and students to become more confident in addressing their own and others' mental health.
- Increase the promotion of internal and external support services for greater student awareness of mental health issues and access to wider information on appropriate professional and self-help.

To find out more contact our President (Education & Welfare) at presew@rguunion.co.uk

REPORT & SUPPORT

This is your new online anonymous reporting system for Gender-Based Violence (GBV). This involves harassment, sexual violence, relationship abuse, bullying, stalking, and more.

By going to reportandsupport.rgu.ac.uk, you can make a report on behalf of yourself, or someone you know, as well as find information of our other support services, get advice on terminology, and find support general support advice. You can also directly contact one of our 19 GBV First Responders across the University who are trained in these matters.

We have a zero tolerance policy of violence towards anyone based on their gender. If you see something, say something, and help eliminate unacceptable behaviour at RGU.





UNIVERSITY-LED SUPPORT SERVICES

Alongside the Union's advice and support department, the University also employs a number of different teams who aim to assist you when required throughout the duration of your time studying at RGU:

- Counselling & Wellbeing

Student life at university can be exciting and rewarding, but we recognise that it can also be stressful and overwhelming. Our wellbeing advisor and counsellors operate a confidential service and are here to talk over any difficulties you experience whilst at university in order to enable you to get the most out of your studies.

www.rgu.ac.uk/counselling

- Study Skills

We understand that the transition from school to university can be challenging, particularly in respect of your studies. The Study Skills Service is here to support you, and can provide confidential, one-to-one advice and guidance on many aspects of academic study, including:

- Academic Writing
- Reading and note-making tips
- Exam preparation and revision techniques
- Study skills (time management, presentation skills)
- English language (for International Students)
- Maths, statistics and numeracy skills
- Basic IT Skills

www.rgu.ac.uk/studyskills

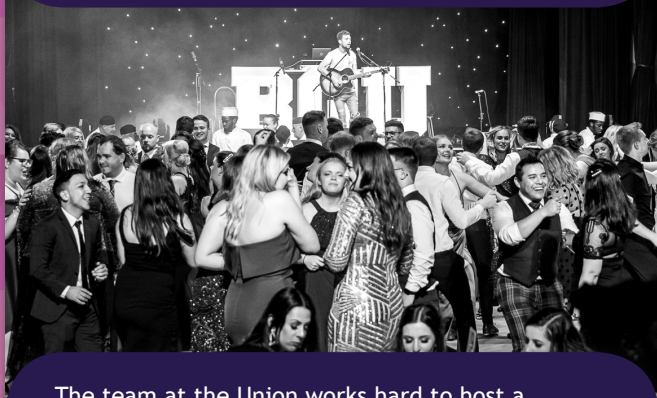
- Disability & Dyslexia Centre

The Disability and Dyslexia team work to ensure that you can reach your full potential by offering confidential advice and specialist support to students with physical and sensory impairments, autism spectrum disorders, health conditions, mental health conditions, dyslexia and those with short or longterm support needs.

www.rgu.ac.uk/disability

You can find out more about all of the University's support departments through their website at www.rgu.ac.uk

TOP QUALITY STUDENT **EVENTS**



The team at the Union works hard to host a number of top events during your time at RGU, from your first days at uni during Freshers Week, right through until your Graduation Ball.

FRESHERS WEEK

The best week of your life, guaranteed! From world famous DJs and celebrity appearances, to city tours and film festivals, Freshers Week is jam packed full of amazing events, all arranged and organised by the Students' Union! Past line-ups have included huge names such as Faithless, You Me At Six, and Lethal Bizzle, all giving our new students a Freshers Week to remember!

LIVE MUSIC & COMEDY

We love live performances! From well known touring comedians such as Chris Ramsey and Ed Gamble to local live music showcases and acoustic acts performing lunchtime sessions on campus, keep up to date with this year's upcoming live events through our website.

GRADUATION BALL

Around 1000 students celebrating across two amazing nights at one of Aberdeen's most iconic venues. The Grad Ball is the ultimate way to end your time at RGU on a high. Look out for ticket details in the second semester.





GET THE **GEAR** FROM OUR DEEVIEW STUDENT STORE

Stop off at the Deeview Student Store and take a look at the fantastic stock of RGU branded items on offer!

Our shelves are stacked with various clothing options, including a wide range of hoodies, tees, and joggers, as well as pens, folders, other essential course stationery, plus artwork and designs by students. Don't forget to ask our shop staff about our customised course-based hoodie service.

Most of our items can also be purchased online through our website at www.rguunion.co.uk and shipped worldwide.

...DON'T SPEND ALL OF YOUR CASH ON TEXTBOOKS!

Got some textbooks you don't need anymore? Why not make some cash out of them, or grab yourself a bargain! Edgeworn Books is RGU:Union's second-hand bookshop, giving students the opportunity to recycle and sell on any old Uni textbooks that are just sitting gathering dust. Take a look at the Edgeworn section in the Deeview Student Store and see if you can save yourself some cash!

rgu:union
Deeview
Student Store

rgu:union
edgeworn
bookshop



HELPING YOU FIND A SAFE & AFFORDABLE PLACE TO LIVE

Finding accommodation can be a time consuming and potentially stressful process, which is why we launched the RGU:Union Live Right Campaign. Its main aim is to support you in finding safe, affordable accommodation while you live and study in Aberdeen.

Each year, thousands of students move from living at home, to student accommodation, to private accommodation and have to make huge decisions about flats, contracts, suppliers, and more. It is important that you have a clear place to go in order to find the information and opportunities that you'll need to find a safe place to stay.

As part of the campaign, we run a number of projects throughout the year, which have been launched as a direct result of student feedback and needs.

Look out for the Live Right Housing Fair, which will take place during the second semester, where we will invite a number of student and private accommodation agents on to the campus to talk to you about their services and properties.

The Live Right section of the RGU:Union website also includes a leasing agent rating system, and lots of documents and guides to give you a helping hand when looking for private accommodation.



THE UNIVERSITY ALSO HAS A DEDICATED
ACCOMMODATION DEPARTMENT,
WHICH YOU CAN CONTACT BY EMAILING
ACCOMMODATION@RGU.AC.UK

BOOKING SPACES ON CAMPUS

If you are looking to host an event on campus, no matter how large or small, the Union team can help.

Whether you're looking to book a small space for a society or group meeting, or need larger areas for performances, conferences or presentations, get in touch with us and we will work to find somewhere suitable for your event.

The Union has a number of spaces across the campus which can be booked by any of our sports clubs, societies or student groups. Just head to our website at www.rguunion.co.uk/bookings to submit a request.

EXTERNAL SPEAKERS

One useful point to note is that if you are booking an external speaker for an event on campus - someone from outwith RGU - you need to let us know at least 3 weeks in advance, as it requires approval from the university.

The University and the Union both support a diverse range of events, clubs and societies at RGU. We recognise the need to provide safe spaces for all our students and staff, with equality and diversity a central part of everything we do.

RGU has something called the Management of Speakers Protocol which helps to ensure that events containing external speakers, taking place on campus, are appropriate and relevant. This allows the university to comply with the UK Government's Prevent Strategy, which is designed to safeguard people and communities.

In practice, we deal with the procedures, so our student groups just need to give us as much notice as possible when booking external speakers and we take care of the details for you, allowing you to focus on planning successful events.

TO FIND OUT MORE ABOUT THE UK GOVERNMENT'S PREVENT STRATEGY, GET IN TOUCH WITH THE TEAM AT THE UNION.



WELCOME TO UNION WAY



Union Way is the Union's home on the RGU campus. You'll find our Student President and staff offices here, as well as the Deevview Student Store, plus a relaxed student social area and bookable meeting space for our societies, sports clubs, and student groups.

SOCIAL SPACE

Take some time out in between classes and stop by The Terrace social space on Union Way. Play some pool, grab a burrito from the pop-up street food outlet, challenge your mates to some FIFA on our PS4, or just get comfy and listen to the music or watch whatever's showing on our 110inch big screen.

MEETING SPACE

You'll also find one of our bookable meeting spaces on Union Way. Fully equipped with flexible layout options, projector & screen, computer, speakers, and a whiteboard, it's ideal for presentations, small or large group meetings and informal events.

WHERE IS IT?

Union Way is in the same building as RGU SPORT, in between Aberdeen Business School and the Ishbel Gordon Building.



LGBT+ NETWORK

Our LGBT+ Network is a free to join group which hosts casual get togethers along with fun nights out in a safe and welcoming environment.

A close relationship with the RGU Staff Rainbow Network has provided a Pride in Partnership worthy collaboration on events like Grampian Pride.

To find out more about the work of this group and get involved, find the network on Facebook or email their team at LGBT@rguunion.co.uk



GO GREEN!

Sustainability is a key priority for our students, staff, and Union. The aim of our Go Green student group is simple: spread the word about environmental topics and provide the tools and opportunities to empower you to look after our shared planet.

Whether it's locally sourcing and distributing organic fruit & veg, the Bike Hire and Repair scheme at Bikepad or getting together to swap clothes and pass on household items, our Go Green volunteers are full of new and bright ideas!

SOUND GOOD? VOLUNTEERING WITH US IS EASY!

Our RGU Go Green group is always looking for volunteers and participants to take part in ongoing and future projects as well as one-off activities.

Any of our projects will offer great opportunities to gain new skills (in fact NUS gave us an award for volunteering opportunities!) from practical upcycling and repair designs to bike maintenance and events management. You'll also meet friends for a lifetime and learn how to work with others as part of a successful team.





SWAP SHOP

With the help of our dedicated and growing bunch of volunteers we operate a multipurpose space at Kaim cottage. In the spirit of mutual exchange and benefit we have called this the Kaim Co-op.

FREE

Need something for the house or a different pair of jeans to wear to that party? At Kaim you will find a household items and clothes swap shop to give you another option for getting these without being out of pocket.

SWAP

If you're moving out, we will also take stuff off your hands so you can be light as a feather. Plus, for everything you donate that someone else picks up, you'll spare the environment the burden of having to produce and transport another one.

RENT A BIKE

On top of bike repair workshops, we service donated bikes to put through the our Bike Hire scheme, so please donate your old bikes or drop the scheme a line to find out how to rent one.

ZERO WASTE

Along with the bike rental scheme we offer zero-waste food in the popular LivEco community café and at pop up events. The café is a place to indulge in great food and learn to cook delicious meals with a zero waste twist.

ALLOTMENT

You might find some of these meals come from our allotment site which includes a shared plot. If you want to learn to garden getting your hands dirty growing a low carbon meal we can support you. Look out for some of the harvesting and foraging events planned for the end of the growing year.

CONTACT THE UNION

GENERAL MANAGER

MICHELE COLLIE

M.COLLIE@RGU.AC.UK

01224 262 292

STUDENT PRESIDENTS

PRESIDENT COMMUNICATION & DEMOCRACY

URSULA OJJI

PRESCD@RGUUNION.CO.UK

01224 262 295

PRESIDENT EDUCATION & WELFARE

EMMANUEL AKERELE

PRESEW@RGUUNION.CO.UK

01224 262 297

PRESIDENT SPORT & PHYSICAL ACTIVITY

KIERAN MATTHEWS

PRESSPA@RGUUNION.CO.UK

01224 263 665

STUDENT VICE PRESIDENTS

VICE PRESIDENT EDUCATION

ROSS LEVEN

VPEDUCATION@RGUUNION.CO.UK

VICE PRESIDENT INTERNATIONAL

DAMI YUSUF

VPINTERNATIONAL@RGUUNION.CO.UK

VICE PRESIDENT SOCIETIES

MEGAN KERR

VPSOCIETIES@RGUUNION.CO.UK

VICE PRESIDENT SPORT

JORDAN MOORE

VPSPORT@RGUUNION.CO.UK

VICE PRESIDENT WELFARE

EMMANUELA JENEWARI

VPWELFARE@RGUUNION.CO.UK

UNION STAFF

**STUDENT DEVELOPMENT
& VOLUNTEERING
CO-ORDINATOR**

EUAN WALKER

E.WALKER6@RGU.AC.UK
01224 262 265

**DESIGN &
MARKETING
MANAGER**

GREGOR MAILER

EXT.MAILER@RGU.AC.UK
01224 262 296

**STUDENT ADVICE &
ADMINISTRATION
CO-ORDINATOR**

ADVICE@RGUUNION.CO.UK
01224 262 294

**UNION
FINANCE OFFICER**

GRAEME CLARK

G.CLARK10@RGU.AC.UK
01224 262 267

**PERSONAL
ASSISTANT**

DEBBIE BOOTH

EXT.BOOOTH@RGU.AC.UK
01224 262 293

**UNION
ADMINISTRATOR**

JO TAYLOR

J.TAYLOR27@RGU.AC.UK
01224 262 266

**DEEVIEW
SHOP
SUPERVISOR**

NORMA POLSON

SHOP@RGUUNION.CO.UK
01224 262 261

**DEEVIEW
SHOP
SUPERVISOR**

LYNNE FRASER

SHOP@RGUUNION.CO.UK
01224 262 261



rgu:union

UNION WAY, GARTHDEE CAMPUS
GARTHDEE ROAD, ABERDEEN
AB10 7GE

01224 262 266
HELLO@RGUUNION.CO.UK
WWW.RGUUNION.CO.UK

HELPFUL UNIVERSITY CONTACTS

MAIN SWITCHBOARD

01224 262 000

STUDENT HELP POINT

01224 263 660

ACCOMMODATION SERVICES

01224 262 130

ACCOMMODATION@RGU.AC.UK

CAREERS & EMPLOYABILITY

01224 262 110

CAREERS@RGU.AC.UK

COUNSELLING & WELLBEING

01224 262 120

COUNSELLING@RGU.AC.UK

LIBRARY

01224 263 450

LIBRARY@RGU.AC.UK

DISABILITY & DYSLEXIA

01224 262 103

INCLUSION@RGU.AC.UK

STUDY SKILLS

01224 263 089

STUDYSKILLS@RGU.AC.UK

INTERNATIONAL STUDENT ADVICE

01224 262 020

ISA@RGU.AC.UK

IT HELPDESK

01224 262 777

ITHELPDESK@RGU.AC.UK

STUDENT FINANCE

01224 262 126

STUDENTFINANCE@RGU.AC.UK

TUITION FEE ENQUIRIES

01224 262 664

STUDENTFINANCE@RGU.AC.UK

ACADEMIC CALENDAR

	Week Commencing	Academic Calendar 2019-20*	Semester
1	9 September 2019	Start of Semester 1 - induction/freshers' activities and introductory teaching	1
2	16 September 2019		2
3	23 September 2019		3
4	30 September 2019		4
5	7 October 2019		5
6	14 October 2019		6
7	21 October 2019		7
8	28 October 2019		8
9	4 November 2019	Assessment Boards (postgraduate)	9
10	11 November 2019	Last date for notification of Assessment Board results from November Assessment Boards to Academic Administration** (Wednesday 13 November)	10
11	18 November 2019	Reading Week***	11
12	25 November 2019		12
13	2 December 2019	End of Semester 1 Teaching (Friday 6 December)	13
14	9 December 2019	Semester 1 Assessments (including Saturday 7 and Saturday 14 December) / Award Ceremonies (10 and 11 December)	14
15	16 December 2019	Semester 1 Assessments (including Saturday 21 December)	15
16	23 December 2019	Student Christmas Break	16
17	30 December 2019	Student Christmas Break	17
18	6 January 2020	Semester 1 - Coursework hand-ins	18
19	13 January 2020	Post-Assessment Break (<i>Coursework hand-ins where required at Head of School discretion</i>)	19
20	20 January 2020	Post-Assessment Break / End of Semester 1 (Friday 24 January)	20
21	27 January 2020	Start of Semester 2	1
22	3 February 2020	Assessment Boards (postgraduate)	2
23	10 February 2020	Assessment Boards (postgraduate)	3
24	17 February 2020	Last date for notification of (provisional) Semester 1 Assessment Board results to Academic Administration** (Monday 17 February)	4
25	24 February 2020		5
26	2 March 2020		6
27	9 March 2020		7
28	16 March 2020		8
29	23 March 2020		9
30	30 March 2020	Student April Break	10
31	6 April 2020		11
32	13 April 2020		12
33	20 April 2020	End of Semester 2 Teaching (Friday 24 April)	13
34	27 April 2020	Reading Week**	14
35	4 May 2020	Semester 2 Assessments (including Saturday 2 and Saturday 9 May)	15
36	11 May 2020	Semester 2 Assessments (including Saturday 16 May)	16
37	18 May 2020	End of Semester 2 for all students except final year honours students (Friday 15 May)	17
38	25 May 2020	Post-Assessment Break	17
39	1 June 2020	Start of Semester 3 (Monday 25 May)	1
40	8 June 2020	Assessment Boards (<i>graduating cohorts</i>)	2
41	15 June 2020	Assessment Boards (<i>continuing cohorts</i>) (until Thursday 11 June)	3
42	22 June 2020	End of Semester 2 for final year honours students (Thursday 11 June)	4
43	29 June 2020	Last date for notification of Assessment Board results to Academic Administration** (Monday 15 June)	5
44	6 July 2020		6
45	13 July 2020		7
46	20 July 2020	Award Ceremonies (14-17 July)	8
47	27 July 2020		9
48	3 August 2020		10
49	10 August 2020	Re-sit and Semester 3 Assessments (undergraduate and postgraduate) (including Saturday 1 and Saturday 8 August)	11
50	17 August 2020	Re-sit and Semester 3 Assessments (undergraduate and postgraduate) (including Saturday 15 August)	12
51	24 August 2020	Post-Assessment Break	13
52	31 August 2020	Re-sit Assessment Boards	14
		End of Semester 3 (Friday 4 September)	15

Semester 1

Semester 2

Semester 3

APRIL / MAY 2020

MON 27 READING WEEK 27 APR - 3 MAY		TUE 28	WED 29		FRI 1	
		THU 30			SAT 2	
					SUN 3	
MON 4 EXAMS 4 MAY - 15 MAY		TUE 5				
		THU 7				
WED 6		THU 7				
FRI 8		SAT 9			SUN 10	

APRIL 2020

MON 13

TUE 14

WED 15

THU 16

FRI 17

SAT 18

SUN 19

MON 20

PUBLIC HOLIDAY

TUE 21

WED 22

THU 23

FRI 24

END OF SEMESTER 2 TEACHING

SAT 25

SUN 26

MARCH / APRIL 2020

03 NOW

STUDENT ACHIEVEMENT AWARDS: NOMINATION DEADLINE

WED 1

2 UHL

FRI 3

SAT 4

9 NUS

9 NOW

TUE 7

8 MED

6 NH₄⁺

FRI 10

GOOD FRIDAY

SAT 11

12 NUS

EASTER SUNDAY

MARCH 2020

MON 16

TUE 17
ST PATRICK'S DAY
LIVE RIGHT HOUSING FAIR

WED 18

THU 19
STUDENT ELECTIONS: NOMINATION DEADLINE

FRI 20

SAT 21
SUN 22

MON 23

TUE 24
STUDENT ELECTIONS: QUESTION TIME
STUDENT ELECTIONS: CAST YOUR VOTES NOW!

WED 25

THU 26
STUDENT ELECTIONS: CAST YOUR VOTES NOW!

FRI 27

SAT 28
APRIL BREAK 28 MAR - 9 APR
SUN 29

STUDENT ELECTIONS: CAST YOUR VOTES NOW!

MARCH 2020

MON 2		TUE 3	
WED 4		THU 5	
FRI 6		SAT 7	
MON 9		TUE 10	
WED 11		THU 12	
FRI 13		SAT 14	
		SUN 15	

SOCIETIES FORUM

STUDENT ELECTIONS: NOMINATIONS OPEN

FEBRUARY / MARCH 2020

MON 17

TUE 18

RGU: UNION ANNUAL GENERAL MEETING (AGM)

WED 19

THU 20

FRI 21

SAT 22

SUN 23

MON 24

TUE 25

WED 26

THU 27

FRI 28

SAT 29

SUN 1

FEBRUARY 2020

MON 3		TUE 4		
WED 5		THU 6		
FRI 7		SAT 8	SUN 9	
MON 10		TUE 11	AGM: MOTION SUBMISSIONS DEADLINE	
WED 12		THU 13		
FRI 14		SAT 15	SUN 16	

JANUARY / FEBRUARY 2020

MON 20

TUE 21

WED 22

THU 23

FRI 24

SAT 25
BURNS NIGHT

SUN 26

MON 27

START OF SEMESTER 2
WELCOME BACK WEEK 27-31 JAN

TUE 28

AGM: MOTION SUBMISSIONS OPEN

THU 30

WED 29

WELCOME BACK FAIR

FRI 31

SAT 1

SUN 2

JANUARY 2020

MON 6 COURSEWORK HAND-INS 6-12 JAN		TUE 7	WED 8		FRI 10	
		THU 9			SAT 11	
				MON 13 POST-ASSESSMENT BREAK 13-26 JAN	SUN 12	
					TUE 14	
						WED 15
						FRI 17
						SAT 18
						SUN 19

DECEMBER 2019 / JANUARY 2020

MON 23

TUE 24

WED 25

MERRY CHRISTMAS!

THU 26

BOXING DAY

FRI 27

SAT 28

SUN 29

MON 30

TUE 31

HOGMANAY

WED 1

NEW YEAR'S DAY

THU 2

SAT 4

SUN 5

FRI 3

DECEMBER 2019

MON 9		TUE 10		WED 11		FRI 13		MON 16		WED 18		FRI 20	

NOVEMBER / DECEMBER 2019

25 NOW

TUE 26

CRAFT FAIR
STUDENT VOICE FORUM

WED 27

87 NH

FRI 29

SAT 30

INUS

2 NOW

TUE 3

WINTER GRADUATIONS

WED 4

WINTER GRADUATIONS

THE 5

9 FRI

END OF SEMESTER 1

SAT 7

EXAMS 7-21 DEC

8 NUS

NOVEMBER 2019

MON 11 STUDENT BY-ELECTION: QUESTION TIME STUDENT BY-ELECTION: CAST YOUR VOTES NOW!		TUE 12 STUDENT BY-ELECTION: CAST YOUR VOTES NOW!		WED 13 STUDENT BY-ELECTION: CAST YOUR VOTES NOW! SOCIETIES FORUM		FRI 15		SAT 16 READING WEEK 16-24 NOV		SUN 17		MON 18		TUE 19		WED 20		THU 21		FRI 22		SAT 23		SUN 24	
---	--	---	--	--	--	--------	--	----------------------------------	--	--------	--	--------	--	--------	--	--------	--	--------	--	--------	--	--------	--	--------	--

OCTOBER / NOVEMBER 2019

MON 28

TUE 29

ONE RGU, MANY NATIONS

WED 30

THU 31

FRI 1

SAT 2

SUN 3

MON 4

TUE 5

WED 6

THU 7

STUDENT BY-ELECTION: NOMINATION DEADLINE @ 2PM

FRI 8

SAT 9

SUN 10

OCTOBER 2019

MON 14		TUE 15	STUDENT VOICE FORUM	
WED 16		THU 17		
FRI 18		SAT 19	SUN 20	
MON 21		TUE 22		
WED 23		THU 24		STUDENT BY-ELECTION: NOMINATIONS OPEN
FRI 25		SAT 26	SUN 27	

SEPTEMBER / OCTOBER 2019

MON 30	TUE 1	
WED 2	THU 3	
FRI 4	SAT 5	SUN 6
MON 7	TUE 8	
WED 9	THU 10	WORLD MENTAL HEALTH DAY
FRI 11	SAT 12	SUN 13

SEPTEMBER 2019

MON 16	TUE 17	WED 18	FRI 20	SAT 21	SUN 22
MON 23	TUE 24	WED 25	FRI 27	SAT 28	SUN 29
PUBLIC HOLIDAY SOCIETY · GIVE IT A GO! WEEK 23-17 SEP					

SEPTEMBER 2019

2 NOW

TUE 3

WED 4

9 UHL

FRI 9

SAT 7

FRESHERS 2019 7-14 SEP

8 NUS

6 NOW

TUE 10

WED 11

THU 12

FRESHERS FAYRE 2019 @ RGU CAMPUS

FRI 13

SAT 14

91 NUS

rgu:union

2019/20

ACADEMIC DIARY

ROBERT GORDON UNIVERSITY STUDENTS' UNION

